

SECOND FLOOR PLAN

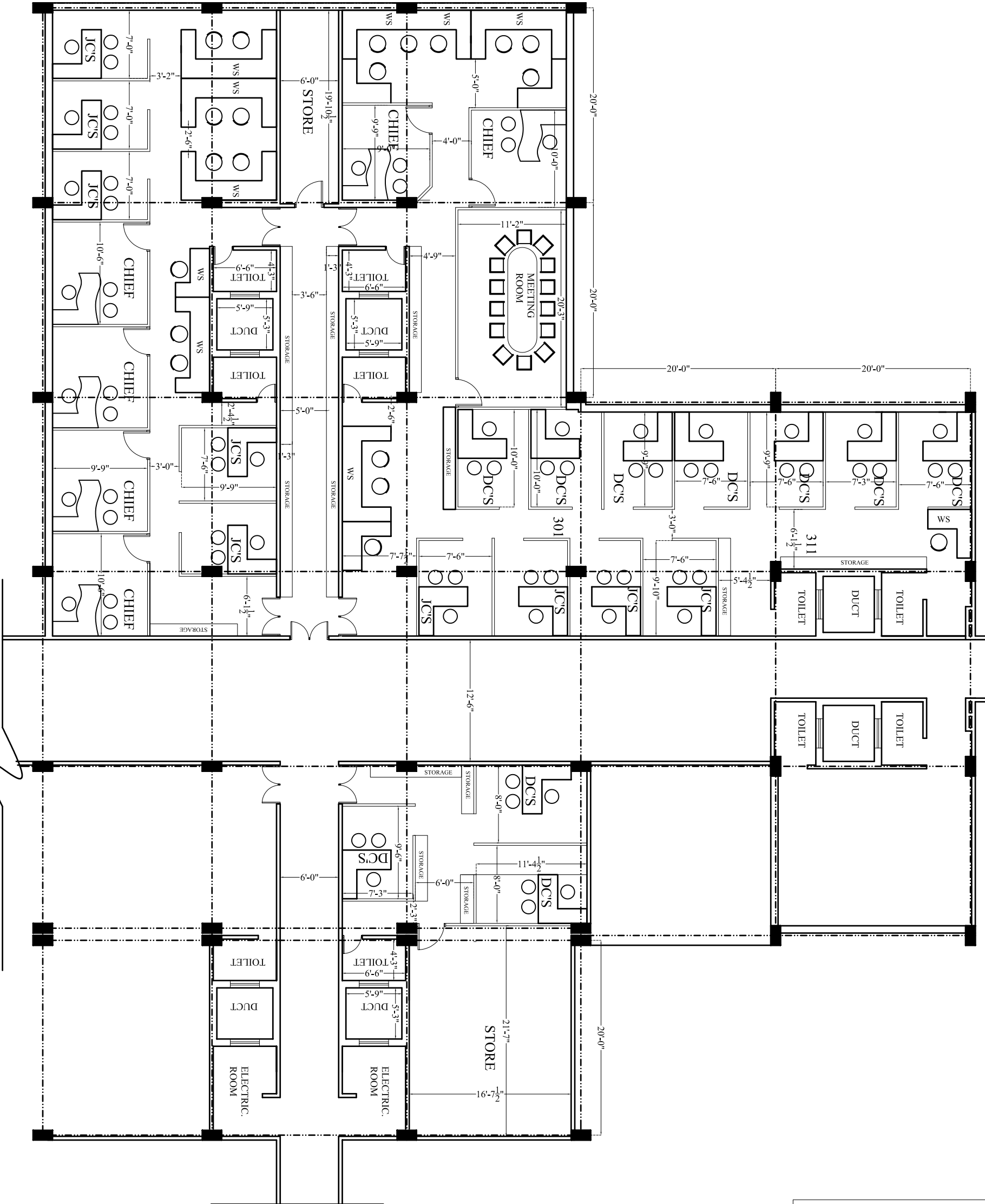
| OFFICERS | NO. |
|-----------------------|--------|
| ED | 01 |
| GM | 04 |
| CHIEF | 02 |
| STAFF | 14 |
| MEETING RM | 01 |
| JC | 03 |
| DC | 02 |
| RECEPTION | |
| PERSONS ACCOMMODATED: | 26 NO. |

NOTE
 this drawing is the property of
 architects atelier/architects atelier pvt. ltd.
 / arch tech projects pvt. ltd. & cannot
 be altered, used or copied without the
 written consent of architects atelier.

| | |
|---------------------------------------|------------------|
| FILE NAME: - <i>servo</i> / | |
| No | Date |
| RURAL ELECTRIFICATION CORPORATION LTD | |
| PALIKA BHAWAN ,R.K PURAM,NEW DELHI | |
| Title INTERIOR LAY OUT | |
| SECOND FLOOR PLAN(OPTION 1) | |
| ami.sami | ketima.sami |
| bachh.mca | bachh.mand (USA) |
| | s.k.sami |
| | bachh.fina |
| Dwg No | 01 |
| Scale | |
| Debit | Date |
| SIML | MARCH,2007 |

architects atelier
 architects atelier pvt. ltd.
 arch tech projects pvt. ltd.
 sco-8, sec-17/6
 Chandigarh-160017
 tel: 702073,715272 mobile: 9814019753 fax: 608940

THIRDFLOOR PLAN



| OFFICERS | NO. |
|------------|-----|
| CHIEF | 04 |
| STAFF | 20 |
| JCS | 09 |
| DCS | 07 |
| MEETING RM | 01 |
| STORE | 01 |

PERSONS ACCOMMODATED:40 NO.
TOTAL PERSONS ACCOMMODATED
ON SECOND& THIRDFLOOR:66NO

NOTE
this drawing is the property of architects atelier/architects atelier pvt. ltd. / arch tech projects pvt. ltd. & cannot be altered, used or copied without the written consent of architects atelier.

FILE NAME: -servo/

| No | Date | Revision |
|----|------|----------|
| | | |

RUBAL ELECTRIFICATION CORPORATION LTD
PALIKA BHAWAN ,R.K PURAM,NEW DELHI

THE INTERIOR LAY OUT
THIRDFLOOR PLAN(OPTION 1)

| | | |
|----------|-----------------|-----------|
| ami.sami | ketana.sami | s.k.sami |
| bach.nca | bach.mand (USA) | bach.fina |
| Dwg No | 02 | |
| Scale | | |
| Debit | | |
| SMIL | MARCH,2007 | |

architects atelier
architects atelier pvt. ltd.
arch tech projects pvt. ltd.
scs-8, sec-17/6
Gurgaon-120017
tel: 702075715272 mobile: 9814019753 fax: 608940